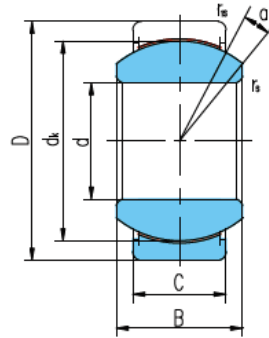
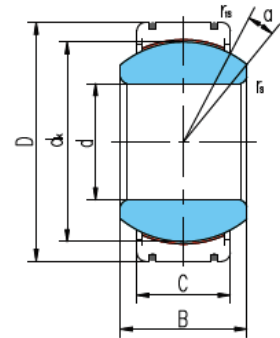


Sliding contact surfaces: Steel / PTFE fabric



GEG...ETL-2RS



GEG...XTL-2RS

Bearing number	Dimensions mm								Load ratings kN		Weight ≈ kg
	d	D	B	C	d _k	r _s min	r _{1s} min	α° ≈	Dynamic	Static	
GEG15ETL-2RS	15	30	16	10	25	0.3	0.3	16	60	100	0.048
GEG17ETL-2RS	17	35	20	12	29	0.3	0.3	19	83	139	0.080
GEG20ETL-2RS	20	42	25	16	35.5	0.3	0.6	17	135	225	0.152
GEG25ETL-2RS	25	47	28	18	40.7	0.6	0.6	17	175	290	0.199
GEG30ETL-2RS	30	55	32	20	47	0.6	1	17	225	375	0.296
GEG35ETL-2RS	35	62	35	22	53	0.6	1	16	275	465	0.402
GEG40ETL-2RS	40	68	40	25	60	0.6	1	17	360	600	0.535
GEG45ETL-2RS	45	75	43	28	66	0.6	1	15	440	735	0.698
GEG50ETL-2RS	50	90	56	36	80	0.6	1	17	690	1150	1.42
GEG60ETL-2RS	60	105	63	40	92	1	1	17	880	1470	2.09
GEG70ETL-2RS	70	120	70	45	105	1	1	16	1130	1890	3.01
GEG80ETL-2RS	80	130	75	50	115	1	1	14	1380	2300	3.61
GEG90ETL-2RS	90	150	85	55	130	1	1	15	1710	2860	5.50
GEG100ETL-2RS	100	160	85	55	140	1	1	14	1840	3080	6.04
GEG110ETL-2RS	110	180	100	70	160	1	1	12	2680	4480	9.74
GEG120XTL-2RS	120	210	115	70	180	1	1	16	3020	5040	15.1
GEG140XTL-2RS	140	230	130	80	200	1	1	16	3840	6400	18.9
GEG160XTL-2RS	160	260	135	80	225	1.1	1.1	16	4320	7200	24.8
GEG180XTL-2RS	180	290	155	100	250	1.1	1.1	14	6000	10000	35.9
GEG200XTL-2RS	200	320	165	100	275	1.1	1.1	15	6600	11000	44.9
GEG220XTL-2RS	220	340	175	100	300	1.1	1.1	16	7200	12000	50.9
GEG240XTL-2RS	240	370	190	110	325	1.1	1.1	15	8580	14300	65.3
GEG260XTL-2RS	260	400	205	120	350	1.1	1.1	15	10000	16800	82.0
GEG280XTL-2RS	280	430	210	120	375	1.1	1.1	15	10800	18000	96.6

Can supply spherical plain bearing with "2GS" seals or without seal.

This series replaces the original series GEG...E(X)T-2RS, capability of GEG...E(X)TL-2RS see page14.